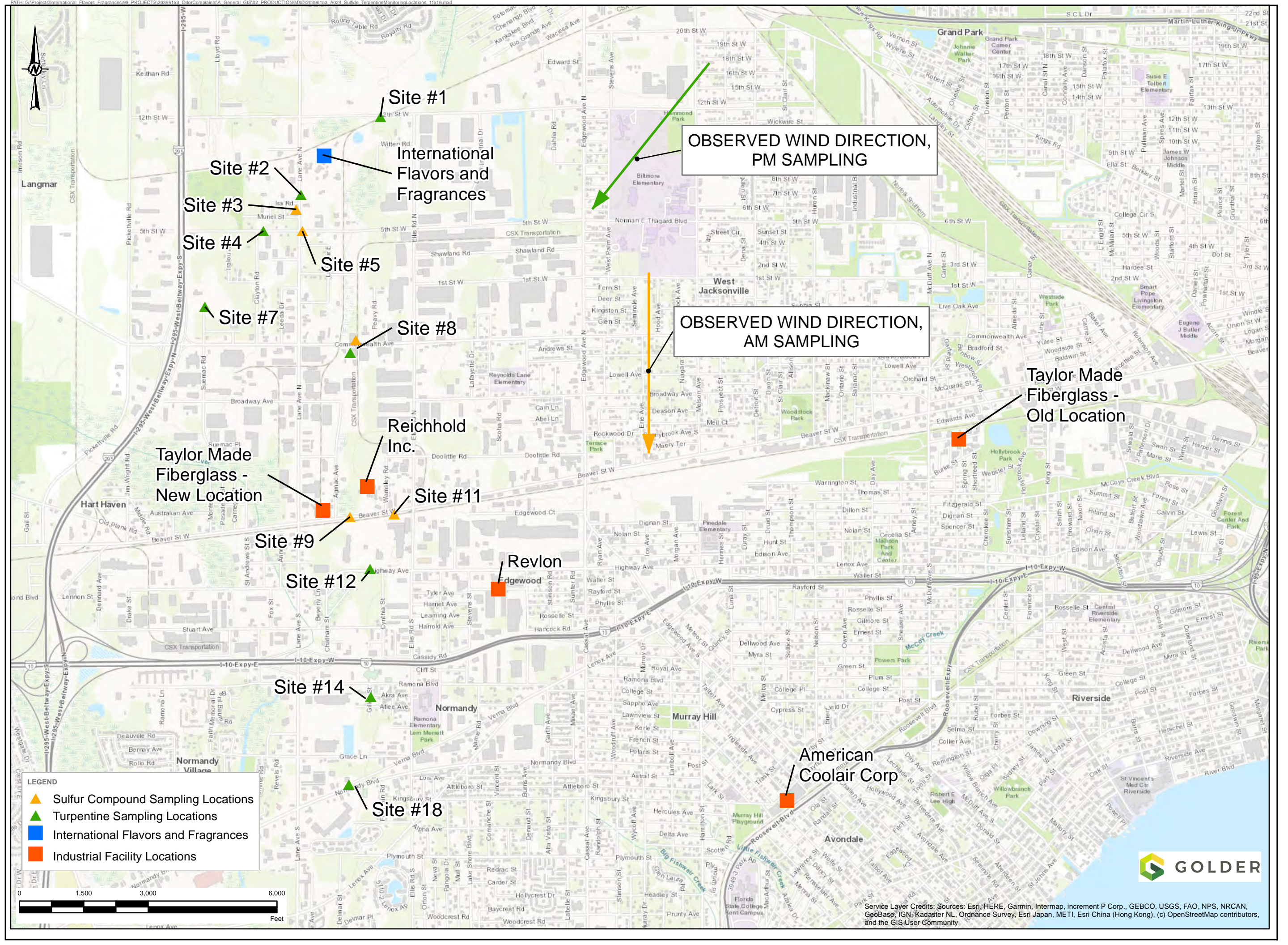


December 28, 2020



OBSERVED WIND DIRECTION,
PM SAMPLING

OBSERVED WIND DIRECTION,
AM SAMPLING

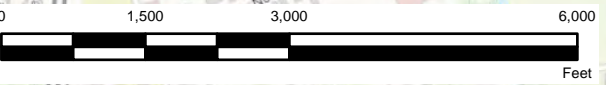
Taylor Made
Fiberglass -
Old Location

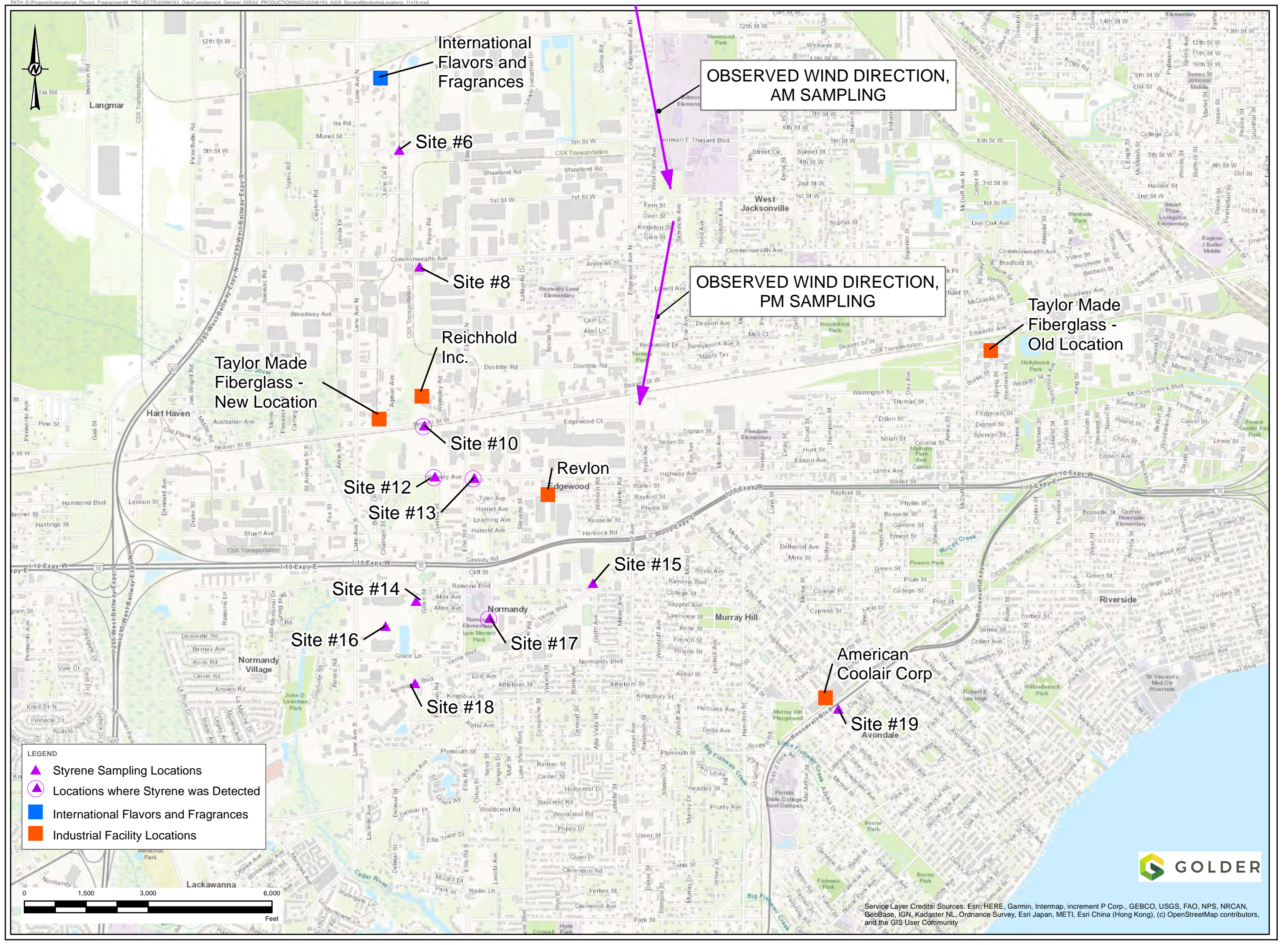
Taylor Made
Fiberglass -
New Location

American
Coolair Corp

LEGEND

- ▲ Sulfur Compound Sampling Locations
- ▲ Turpentine Sampling Locations
- International Flavors and Fragrances
- Industrial Facility Locations





International
Flavors and
Fragrances

OBSERVED WIND DIRECTION,
AM SAMPLING

Site #6

OBSERVED WIND DIRECTION,
PM SAMPLING

Site #8

Taylor Made
Fiberglass -
Old Location

Taylor Made
Fiberglass -
New Location

Reichhold
Inc.

Site #10

Revlon
Edgewood

Site #12

Site #13

Site #15

Site #14

Site #17

Site #16

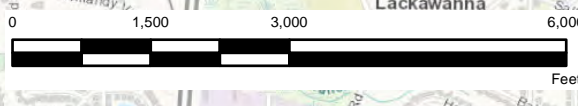
Site #18

American
Coolair Corp

Site #19
Avondale

LEGEND

- ▲ Styrene Sampling Locations
- ◀ Locations where Styrene was Detected
- International Flavors and Fragrances
- Industrial Facility Locations

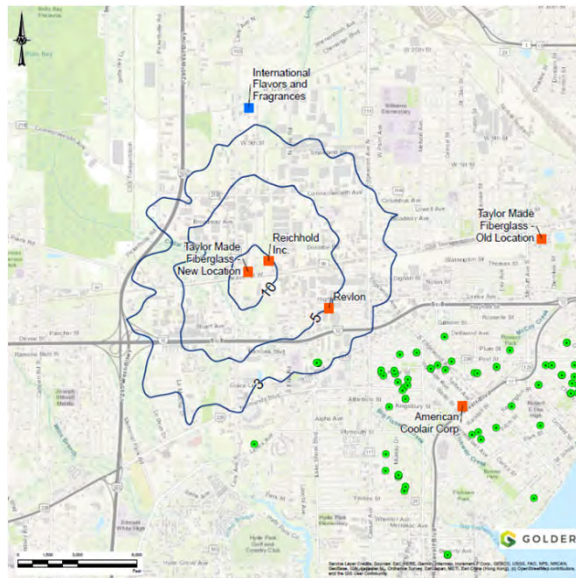


Service Layer Credits: Sources: Esri; HERE, Garmin, Intermap, increment P Corp., GEBCO, USGS, FAO, NPS, NRCAN, GeoBase, IGN, Kadaster NL, Ordnance Survey, Esri Japan, METI, Esri China (Hong Kong), (c) OpenStreetMap contributors, and the GIS User Community

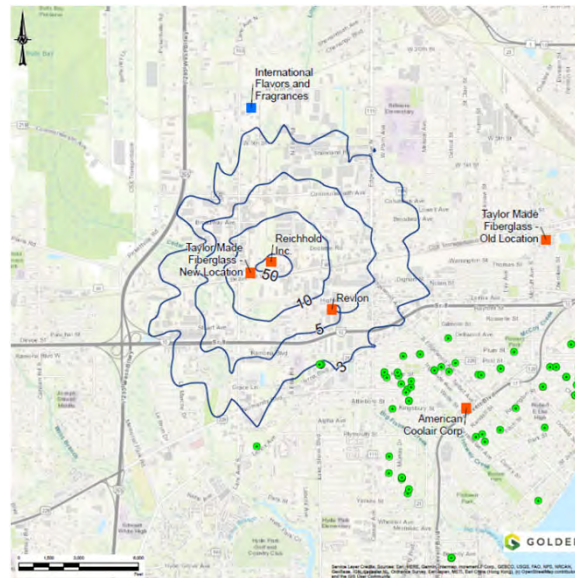
STYRENE MODELING RESULTS

DAYTIME MODELED STYRENE CONCENTRATIONS (PPB) – HOURLY AVERAGE

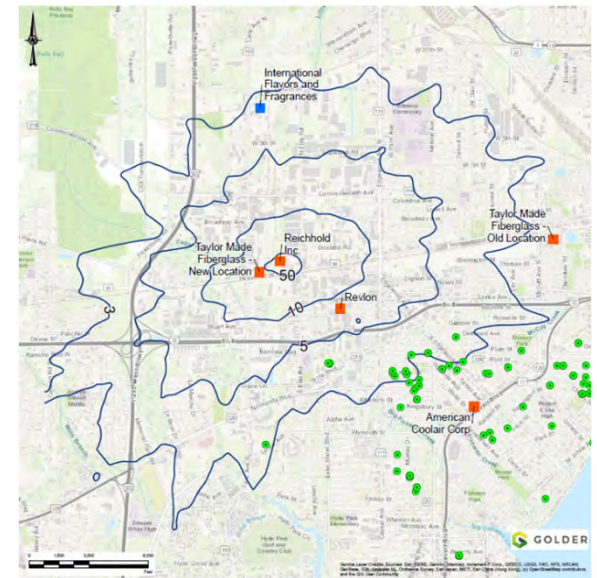
Source on Beaver Street



Source on Wamsley Road
(as of September 2020)



Combined volume from sources
on Beaver St and Wamsley Rd
(as of September 2020)

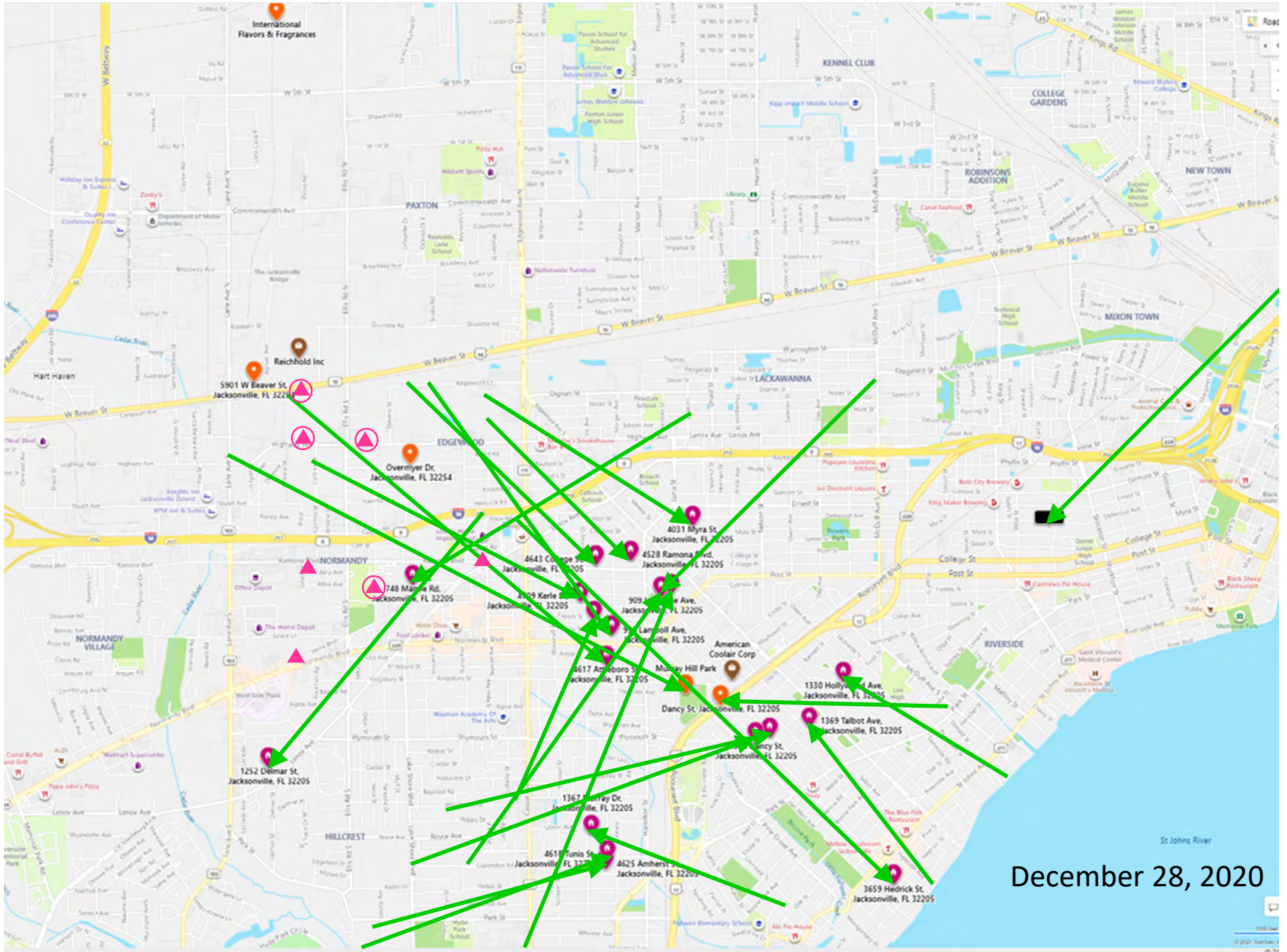


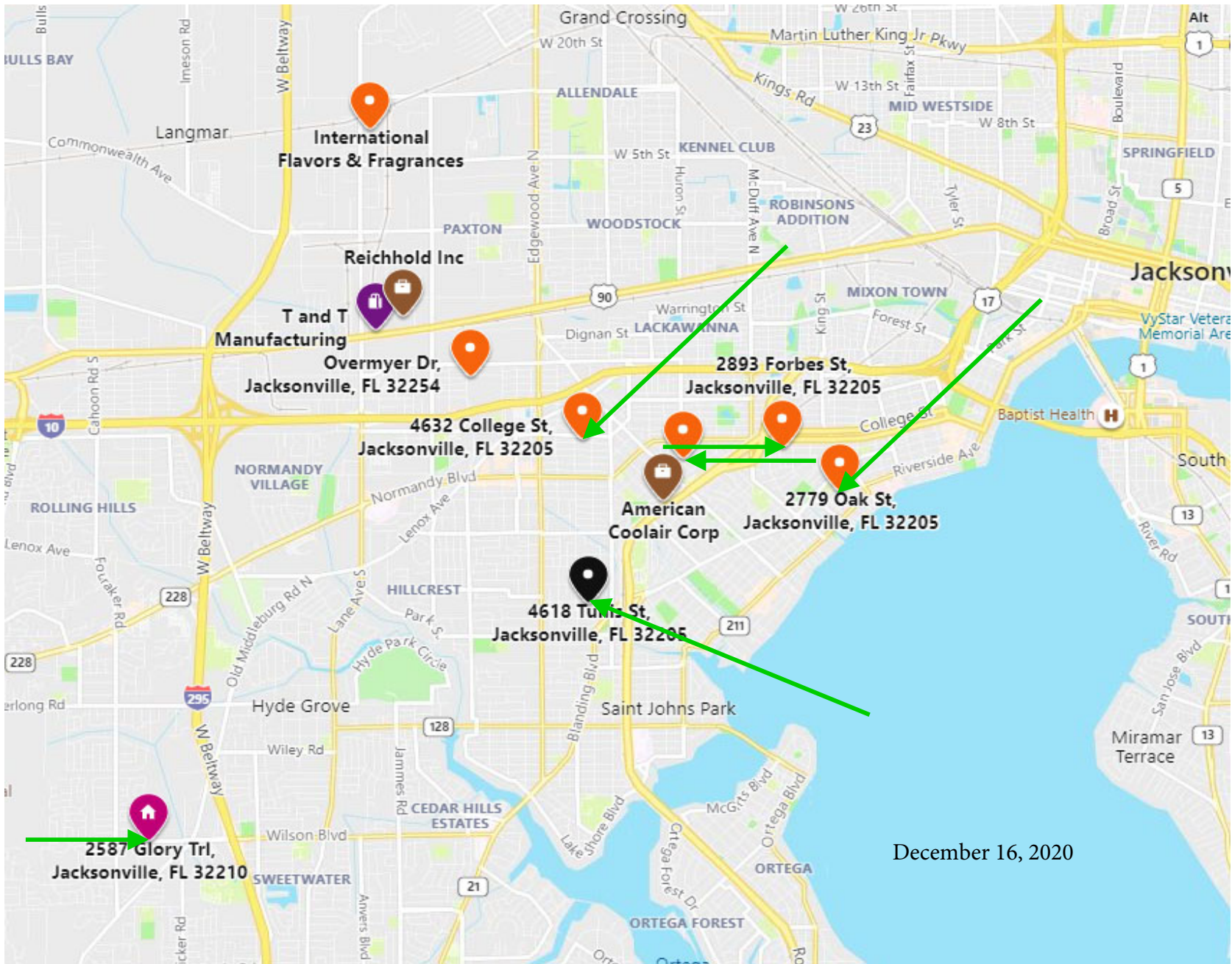
LEGEND

- International Flavors and Fragrances
- Industrial Facility Locations
- Odor Complaint Locations
- Daytime Modeled Styrene Concentrations (ppb) - Hourly Average

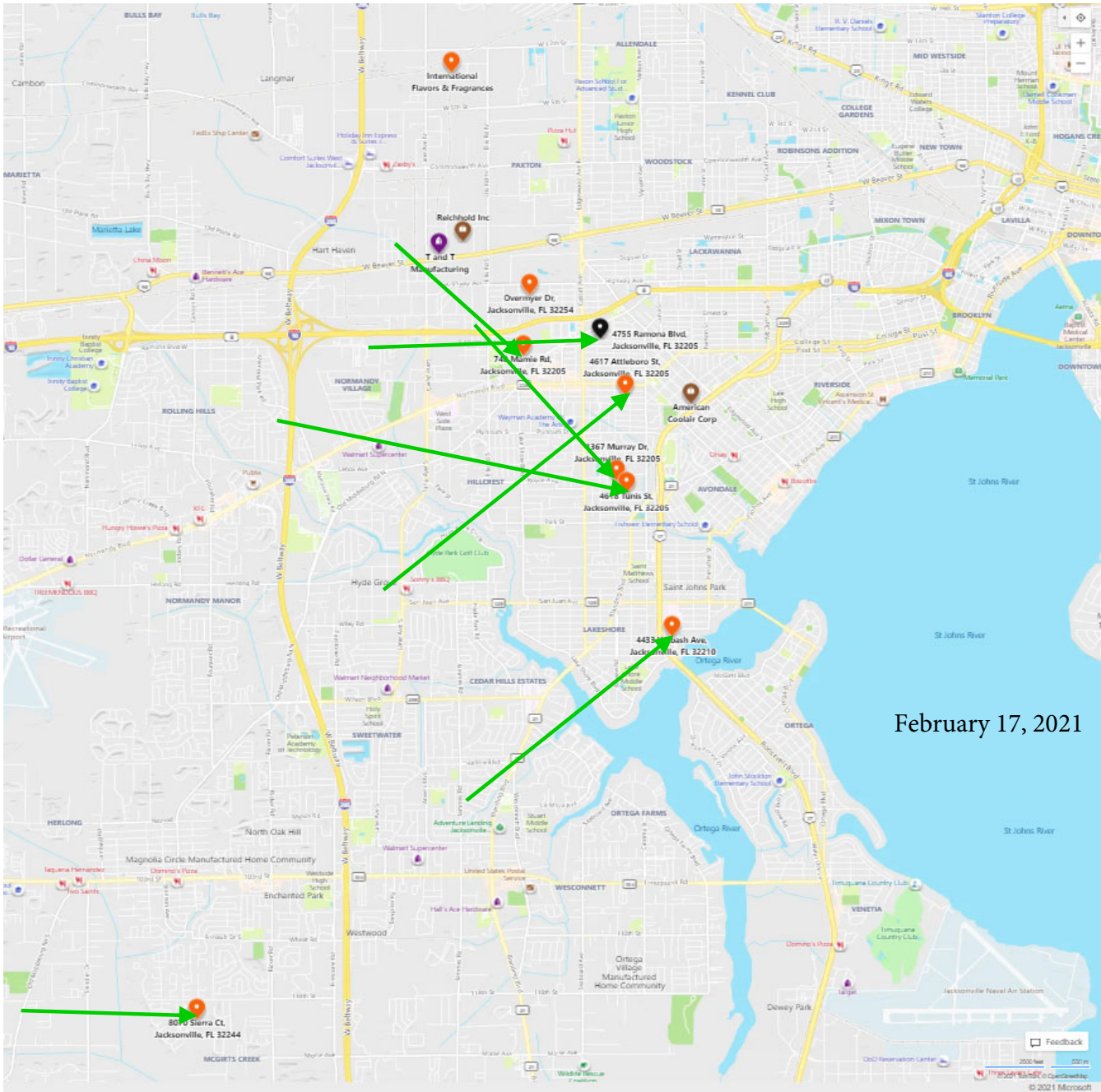
Styrene model inputs from public records:

- Beaver Street source reported 2019 annual emissions of 6.7 tons of styrene
- Wamsley Road source reported 2020 Q2 emissions of 2301 lbs of styrene





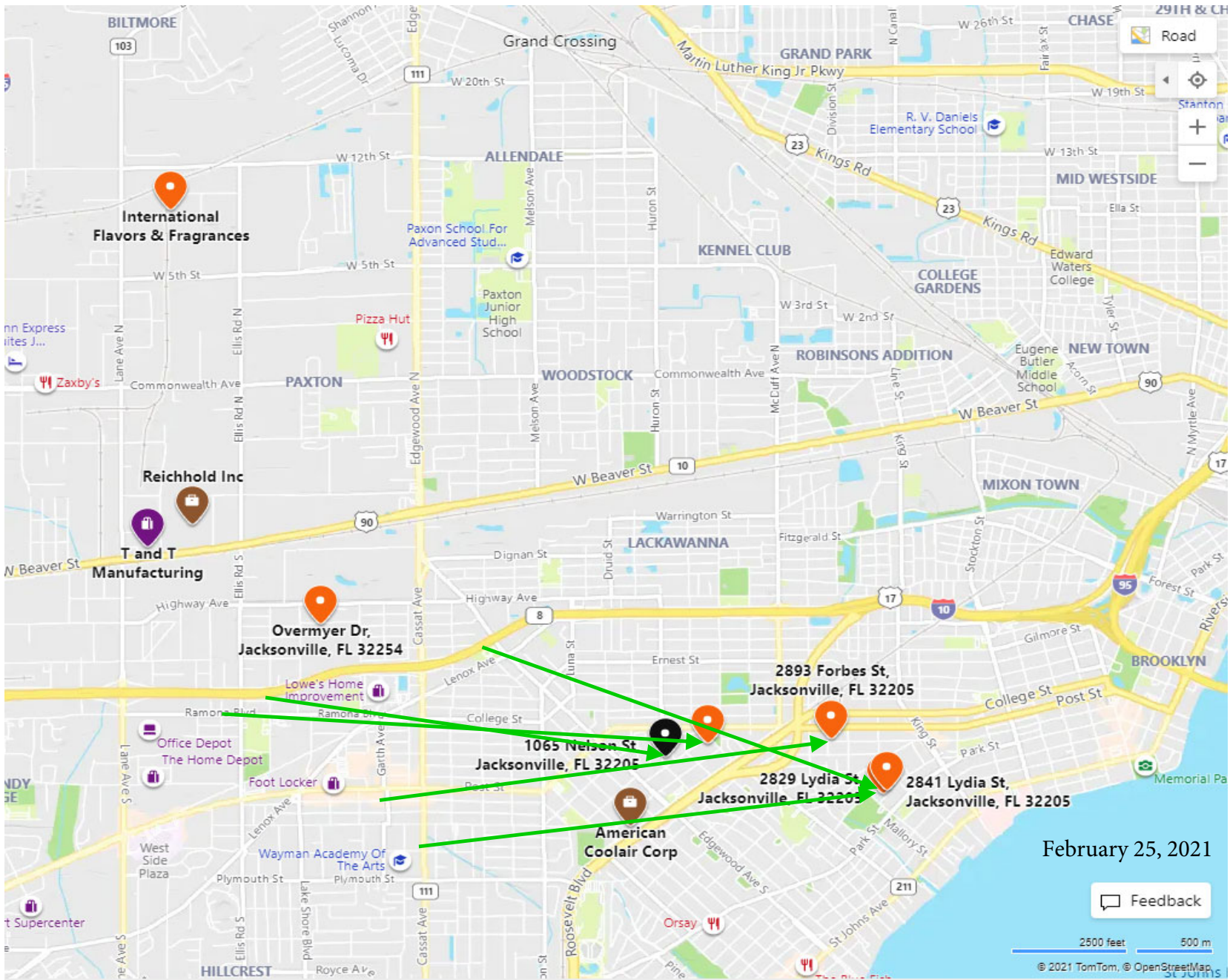
December 16, 2020



February 17, 2021

Feedback

© 2021 Microsoft





IFF – A PARTNER IN THE JACKSONVILLE COMMUNITY



International Flavors & Fragrances (IFF)'s purpose is applying science and creativity for a better world. Core to the company's strategy for success is our central vision: Be the partner for essential solutions.